

SUMMITS On The Air in New Mexico

(is this amateur radio's)

ULTIMATE CHALLENGE?

Please hold questions for the end

- You will be able to access this slide presentation after the convention from the DCHF website. In these slides will be the internet URL's. You will not need to write them down during the presentation.

In this presentation you
will learn:

(Pyramid Peak, Gallup

- What “counts” as a SOTA peak?
- How to find SOTA activations to CHASE
- How to LOG your CHASES
- How to find peaks to activate
- Where to connect with other area activators
- Getting started activating
- Some equipment and antenna hints
- Mountain Goat / Shack sloth
- A drive-up peak for anyone
- Adventurous peaks



HARRIS MESA

W5N/NL-004

south of Bloomfield, NM

- A SOTA peak is must have at least 500 feet of prominence.
- New Mexico SOTA peaks are cataloged.
- Peak ID consists of association designation and specific peak
- W5N for New Mexico, followed by two letters for a grouping, and three numbers.
- It is classified by its 7142 ft elevation as a 6 point peak



SOTA home page:
<https://www.sota.org.uk/>



Welcome to **Summits on the Air!**

SOTA is an award scheme for radio amateurs that encourages portable operation in mountainous areas.

Quick links: [Joining In](#) | [SOTAwatch](#) | [Database](#) | [Summit Listings](#) | [Shop](#) | [Mapping](#) | [Donate to SOTA](#)

<https://sota-shop.co.uk/awardrules>

Award Rules



Certificates and Trophies

Certificates are available for gaining 100, 250, 500, 1000 points (Activators and Chasers). These handsome certificates are printed in colour and are personally signed by a member of the SOTA Management Team. Each certificate is individually numbered and printed with your own callsign or SWL number. Endorsements such as "All CW" or "VHF" can be added on request at no extra charge. The certificates are posted to you in a board-backed envelope to ensure that they arrive in good condition. For those

with boundless energy and enthusiasm there are additional certificates for 2,500, 5,000, and 10,000, and even higher points.

Trophies are made from a glass block with the SOTA logo sand blasted on the rear. The trophy may be personalised with your callsign, the date that you achieved the award and other information – all engraved on the front face and infilled in a choice of colours.

The following links take you to the relevant pages with details of the rules for the various awards:

[Trophies](#)

[SOTA Unique award](#)

[Mountain Explorer and Mountain Hunter](#)

[Summit to Summit Awards](#)

[Microwave Awards](#)

[SOTA Complete](#)

<https://sota-shop.co.uk/wp/shack-sloth-mountain-goat/>



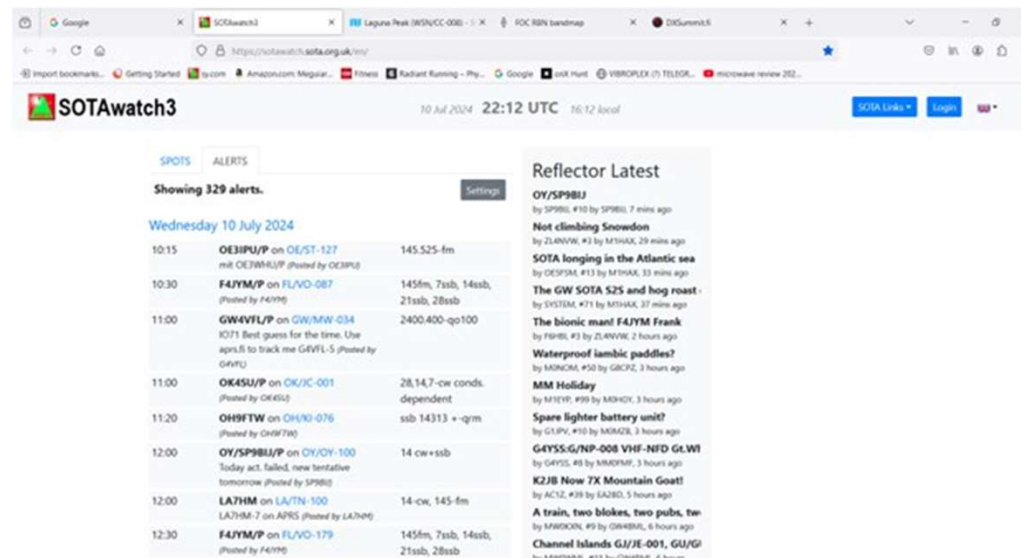
At 1,000 points Activators achieve “Mountain Goat” status and Chasers/SWLs are “Shack Sloths”. Achieving “Mountain Goat” and “Shack Sloth” status requires considerable dedication and effort and so, trophies may be claimed to mark this significant milestone. Each 9cm x 9cm “Ice block” is made entirely by hand in the Scottish Highlands. Craftsmen create a unique “running scallop” along each edge of the raw glass so each trophy will be unique. The trophy can be individually engraved with your callsign and the year in which you reached 1,000 points. Endorsements like “All CW” or “VHF” can also be engraved for a small additional charge.

Starvation Peak: near Ribera, NM



Find SOTA activator to work!

<https://sotawatch.sota.org.uk/en/> then click on “ALERTS”



The screenshot shows the SOTAwatch3 website interface. The main content area is titled "Showing 329 alerts." and is filtered for "Wednesday 10 July 2024". The alerts are listed in a table with columns for time, call sign, location, and frequency. A "Reflector Latest" sidebar on the right shows recent posts from various reflectors.

Time	Call Sign	Location	Frequency
10:15	OE3IPU/P on OE/ST-127 with OE3WAL/P (Posted by OE3IPU)	145.525-fm	
10:30	F47YM/P on FL/VO-087 (Posted by F47YM)	145fm, 7ssb, 14ssb, 21ssb, 28ssb	
11:00	GW4VFL/P on GW/MW-034 IOTI Best guess for the time. Use aprs.fi to track me G4VFL-5 (Posted by G4VFL)	2400.400-qo100	
11:00	OK4SU/P on OK/KC-001 (Posted by OK4SU)	28,14,7-cw conds. dependent	
11:20	OH9FTW on OH/NO-076 (Posted by OH9FTW)	ssb 14313 + -qrm	
12:00	OY/SP9BJ/P on OY/OY-100 Today act. failed, new tentative tomorrow (Posted by SP9BJ)	14 cw+ssb	
12:00	LA7HM on LA/TN-100 LA7HM-7 on APRS (Posted by LA7HM)	14-cw, 145-fm	
12:30	F47YM/P on FL/VO-179 (Posted by F47YM)	145fm, 7ssb, 14ssb, 21ssb, 28ssb	

Reflector Latest

- OY/SP9BJ by SP9BJ, #10 by SP9BJ, 7 mins ago
Not climbing Snowdon
by ZL4NVR, #3 by M3HAK, 29 mins ago
- SOTA longing in the Atlantic sea
by OE3PML, #13 by M3HAK, 33 mins ago
- The GW SOTA S25 and hog roast
by S333M, #71 by M3HAK, 37 mins ago
- The bionic man! F47YM Frank
by F6PBL, #3 by ZL4NVR, 2 hours ago
- Waterproof iambic paddles?
by M3KCR, #50 by G4CPZ, 3 hours ago
- MM Holiday
by M7E1Y, #99 by M3HAK, 3 hours ago
- Spare lighter battery unit?
by G4BRV, #50 by M3HAK, 3 hours ago
- G4YSS-G/NP-008 VHF-NFD GLWI
by G4YSS, #8 by M3HAK, 3 hours ago
- K2JB Now 7X Mountain Goat!
by AC1Z, #38 by LA2BD, 5 hours ago
- A train, two blokes, two pubs, tw
by M3KCR, #9 by G4HBM, 6 hours ago
- Channel Islands GJ/JE-001, GJ/GJ
by M3WML, #11 by G4HBM, 6 hours ago

Click on "SPOTS" to see call, mode, and frequency of **activators on right now!**

The screenshot shows the SOTAwatch3 website interface. At the top, there's a navigation bar with the site logo, date (10 Jul 2024), time (22:20 UTC), and local time (16:20 local). There are also buttons for "SOTA Links" and "CLOCK RUNNER". Below the navigation bar, there are two tabs: "SPOTS" (selected) and "ALERTS". The "SPOTS" section displays "Showing latest 50 spots." and a table of recent spots. The "Reflector Latest" section on the right shows a list of recent posts from a reflector.

Time	Call	Mode	Frequency	Activator
22:19	K9PM/P	W7A/AP-032	21.074	data
22:18	KD7QOW	W7W/LC-041	7.205	ssb
22:08	K9PM/P	W7A/AP-032	21.074	data
22:04	KD7QOW	W7W/LC-041	21.053	cw
22:02	K9PM/P	W7A/AP-032	28.074	data
21:59	KD7QOW	W7W/LC-041 [+]	28.051	cw
21:50	HIBAM	HU/EE-025	14.338	ssb
21:42	KD7QOW	W7W/LC-041	7.051	cw
21:12	VK4JM	VK4/SE-126	7.031	ssb
21:07	K9PM/P	W7A/AP-032	21.0635	cw
20:57	NA7EE	W7O/CC-066	7.0280	cw
20:57	K9PM/P	W7A/AP-032	21.0635	cw
20:49	NA7EE	W7O/CC-066	14.0580	cw
20:46	K9PM/P	W7A/AP-032	21.0635	cw
20:43	NA0MT	W7Y/NW-028	14.285	ssb
20:38	NA7EE	W7O/CC-066	21.033	cw
20:38	AE7I	W6/NS-159	28.032	cw
20:35	K9PM/P	W7A/AP-032	21.0635	cw

Reflector Latest

OY/SP9BJ
by SP9BJ, #10 by SP9BJ, 16 mins ago

Not climbing Snowdon
by ZL4NWW, #3 by M3HAX, 38 mins ago

SOTA longing in the Atlantic sea
by OESFSM, #13 by M3HAX, 41 mins ago

The GW SOTA S2S and hog roast
by SYSTEM, #71 by M3HAX, 46 mins ago

The bionic man! F4JYM Frank
by F9HBL, #3 by ZL4NWW, 2 hours ago

Waterproof iambic paddles?
by M3NCR, #50 by G8CFZ, 3 hours ago

MM Holiday
by M3EYP, #99 by M3HXY, 3 hours ago

Spare lighter battery unit?
by G1SPV, #10 by M3MZX, 3 hours ago

G4YSS-G/NP-008 VHF-NFD Gt.WI
by G4YSS, #8 by M3MFM, 3 hours ago

K2JB Now 7X Mountain Goat!
by AC1Z, #39 by EA280, 5 hours ago

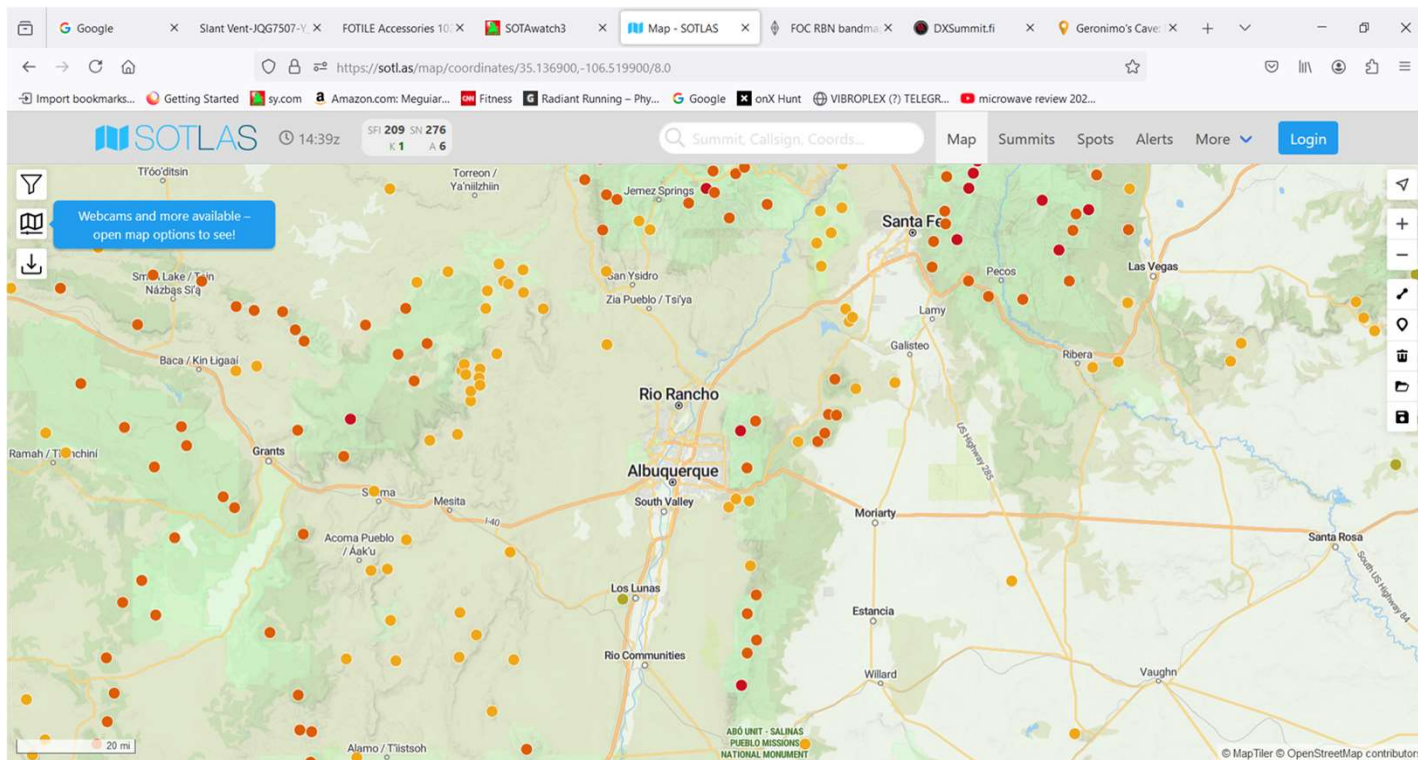
A train, two blokes, two pubs, tw
by M3WOK, #9 by O948ML, 6 hours ago

Channel Islands GJ/JE-001, GU/GI
by M3WML, #11 by G488ML, 6 hours ago

Log your activations and
chases here

<http://www.sotadata.org.uk/>

get more peak information here
<https://sotl.as>



example

Canjilon Mtn; W5N/OT-004

Coordinates: **36.568, -106.3517** [Open](#) [Copy](#)

Locator: **DM66tn**

First activation: **KESAKL** on 02 Oct 2012

Resources (+ Article)

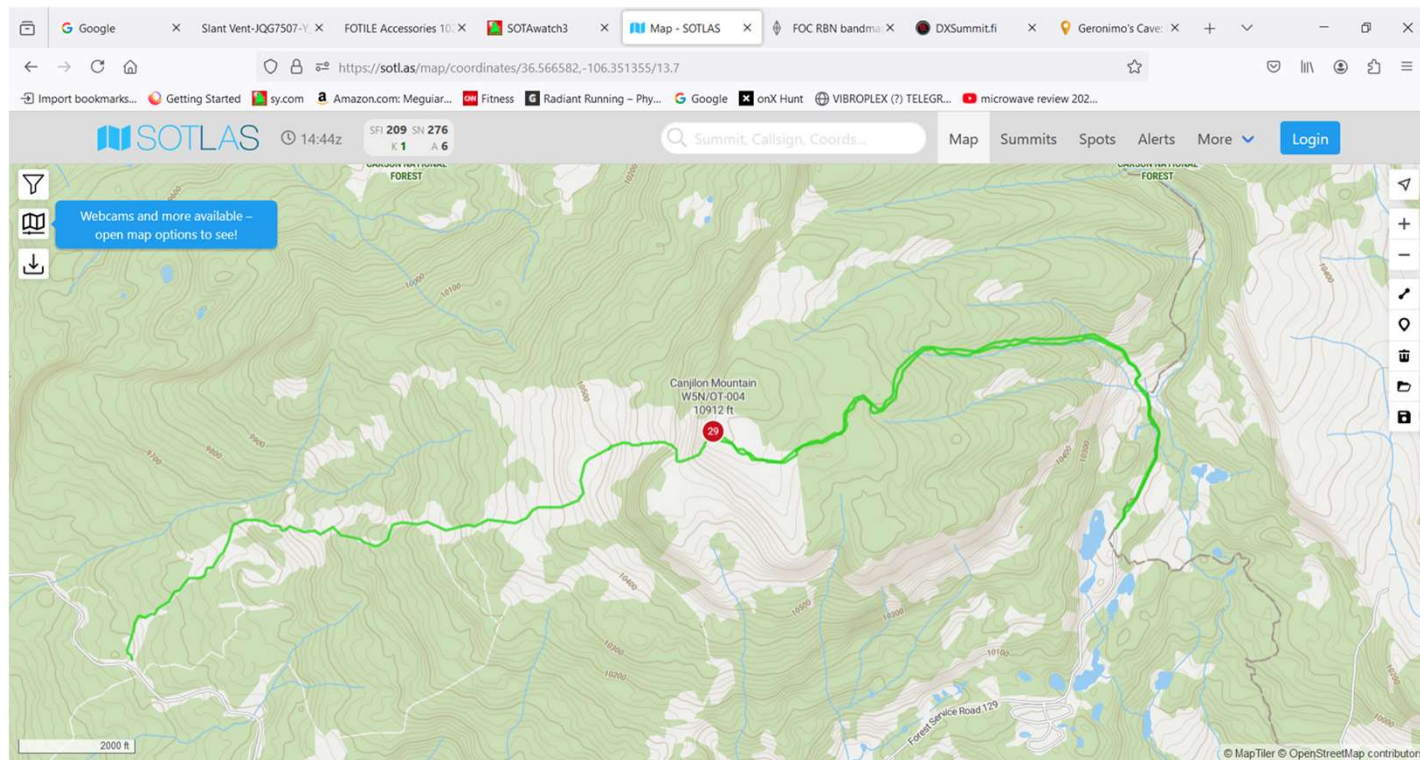
- Google: Canjilon Mountain
- [Canjilon Pictures Western Slopes Route 2021](#) (by KESAKL on 24 Oct 2021)
- [Canjilon Pictures 2012](#) (by KESAKL on 03 Oct 2012)
- [Forest Service Trail 54 Description](#) (by KESAKL on 03 Oct 2012)
- [Route Description - from upper Canjilon Lake](#) (by KESAKL on 03 Oct 2012)

Routes

Title	Difficulty	Ascent	Distance	Duration
Canjilon Mountain RT from Upper Canjilon Lake		814 ft (*)	4.7 mi	
Canjilon Western Slopes - Hike		440 ft (*)	0.5 mi	
Canjilon Western Slopes - Drive		1004 ft (*)	2.1 mi	

(*) Difference between highest and lowest elevation, excluding counter-ascents

Right click any place on map to get the coordinates for that spot

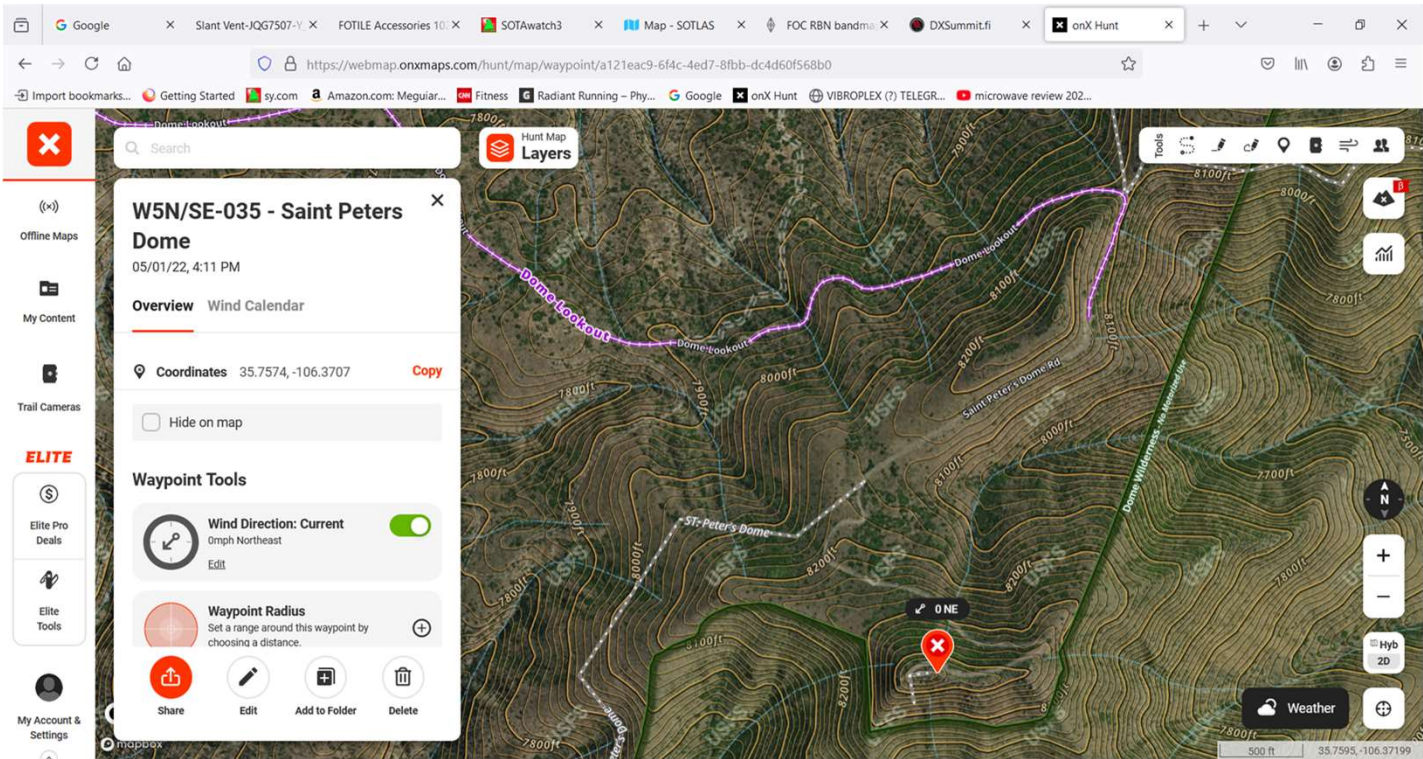


Rendija Crater, chain of craters road, Mal Pais

Mike, KE5AKL, activating



ONXMAPS.COM



ONXHUNT maps

- This is an annual subscription which is recommended for finding routes up SOTA peaks. It displays peaks with topographic map, or in 3D, or with google satellite photo, and
- shows boundaries of public and private lands.
- This map is extremely helpful in finding public land routes to SOTA peaks

Cerro Blanco W5N/CC-021 a meteor impact crater



W5N SOTA discussion group

- Conor, N5XR, moderator
- join here:
<https://groups.io/g/W5N-SOTA>
- Information about peaks
- Help with antennas, radios
- Get reports from recent activations on road and trail conditions
- Report your adventures activating peaks

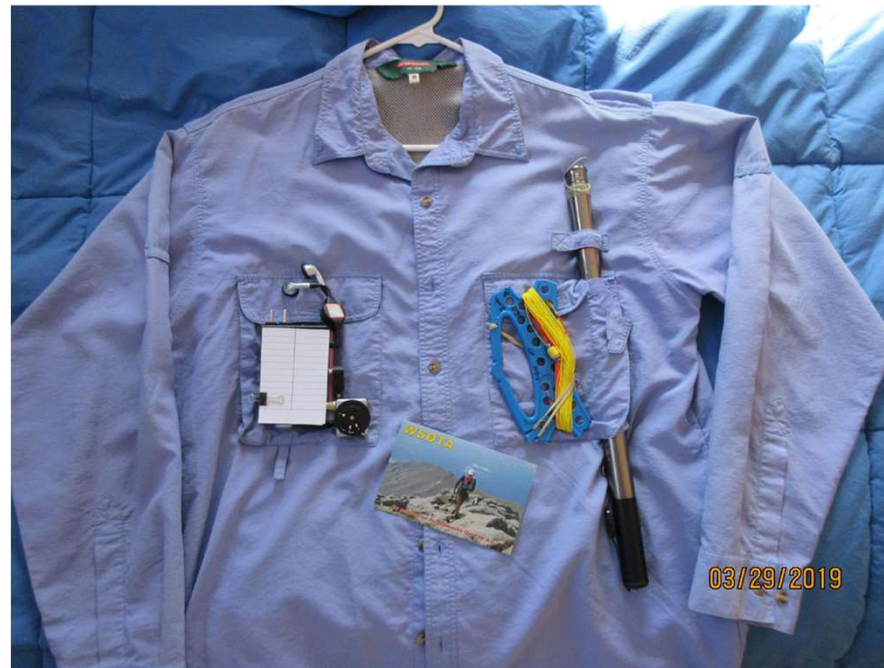
Handy QR link to groups.io ->



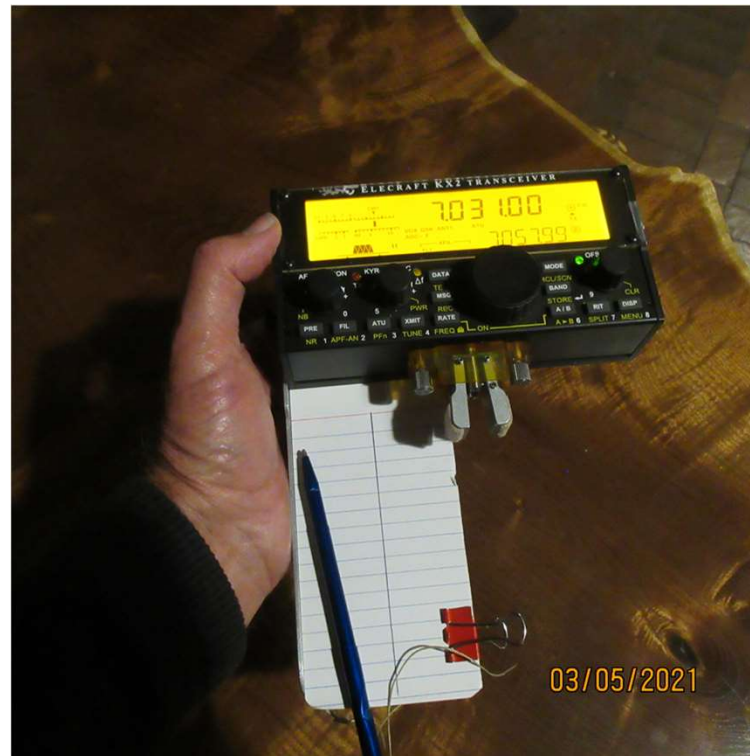
your first activation

- Probably a drive-up, perhaps **Sandia Crest**
- Before you go: post an ALERT, as previously mentioned.
- IF you are on CW, when a skimmer picks up your call, and posts to the RBN (Reverse Beacon Network), this will be matched to your ALERT and automatically spotted! Not so for SSB, but you can spot yourself with your cell phone if there is cell signal.
- Equipment: whatever you have will likely do to get your feet wet
- Antenna: what's in your closet? A 20M dipole perhaps?
- Be assured, your antenna does not need to be HIGH to work when on a mountain peak! We have had success with the wire laying on the ground.

In time, you may seek to minimize size and weight. Here is a complete SOTA set-up



If SSB is desired, the Elecraft KX2 is a high end answer shown here with a paddle and a homemade tray attached for a log.



If only CW is required, Elecraft now offers the KH1. It has a cover to protect the face, shown open here revealing log. There is also keying memory that can serve for a log.



Here is the MTR5 by LNR (KD1JV design) five bands, also CW only, folding protective tray is added homemade. LiPO battery is seen on the side, an end-fed halfwave matching device built into yellow case plugs into the RF jack. No coax needed with an endfed HALF wave.



ANTENNA'S

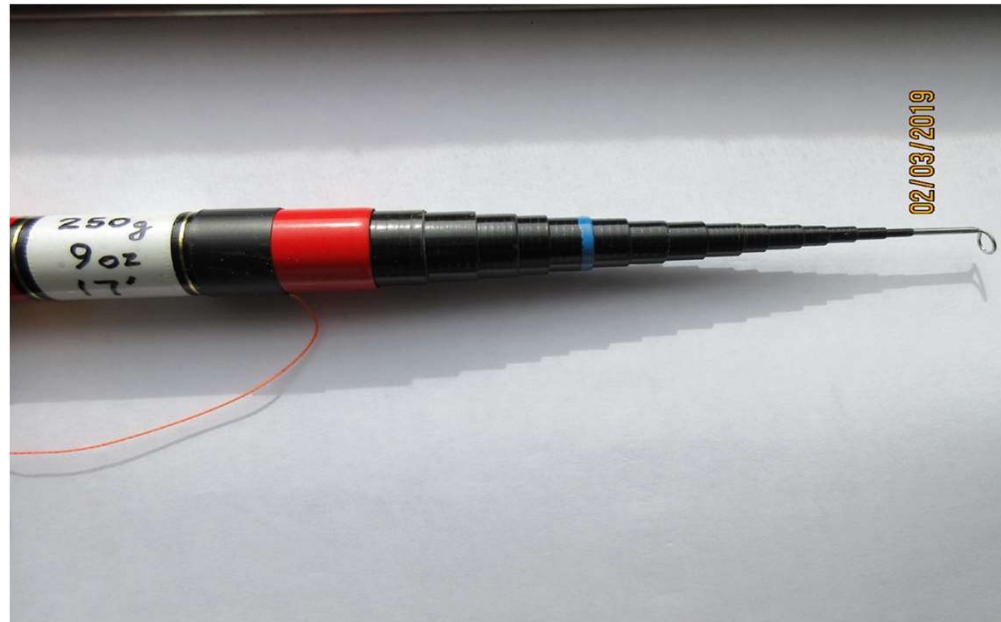
don't buy one!!! MAKE ONE. This one weighs 2 ounces



This is all there is to the tiny high impedance matching device. (resonant antennas do not require a “tuner”)



This 18 foot tall pole collapses to just 18 inches, weighs only 9 ounces, and has supported the EFHW for hundreds of activations in high winds when deployed properly.





No need to “guy” it, just lean it against a bush or tree branch!

SIMPLE.

QUICK.

LET’S GO !!!!



Tom, K6TAA, on La Madera Peak near Ojo Caliente, NM. He is close to completing a first ever, SOTA activation from every state.

Carol's turn, K5TFL

- Carol has done 105 activations and is closing in on achieving her Mountain Goat !!!
- She will share with you tips from her experience activating HF SSB.



CAROL SUGARS – K5TFL

SOTA – EQUIPMENT AND TECHNIQUES



Thank You



K5TFL, G6TFL



Carol Sugars



carolsugars@gmail.com



CT7/K1JD/p on CT/DL-003 August 27, 2022

John K1JD moved to NM from RI (200' ASL) in 2012. He became the 12th North American Mountain Goat in June 2014 and currently has over 800 activations and 7500+ points.

John was originally licensed in May 1963 (8th grade) as KN1FVS, an avid CW operator for 61 years!



SOTA Activations in VK2/VK7 November – December 2016



John DePrimo, K1JD

JohnK1JD@comcast.net

Santa Fe, NM

VK7/K1JD 23 November 2016
Mt Wellington VK7/SC-001 Tasmania

DCHF Sept 20, 2024 – K1JD

Six weeks away

October 25 – December 6, 2016



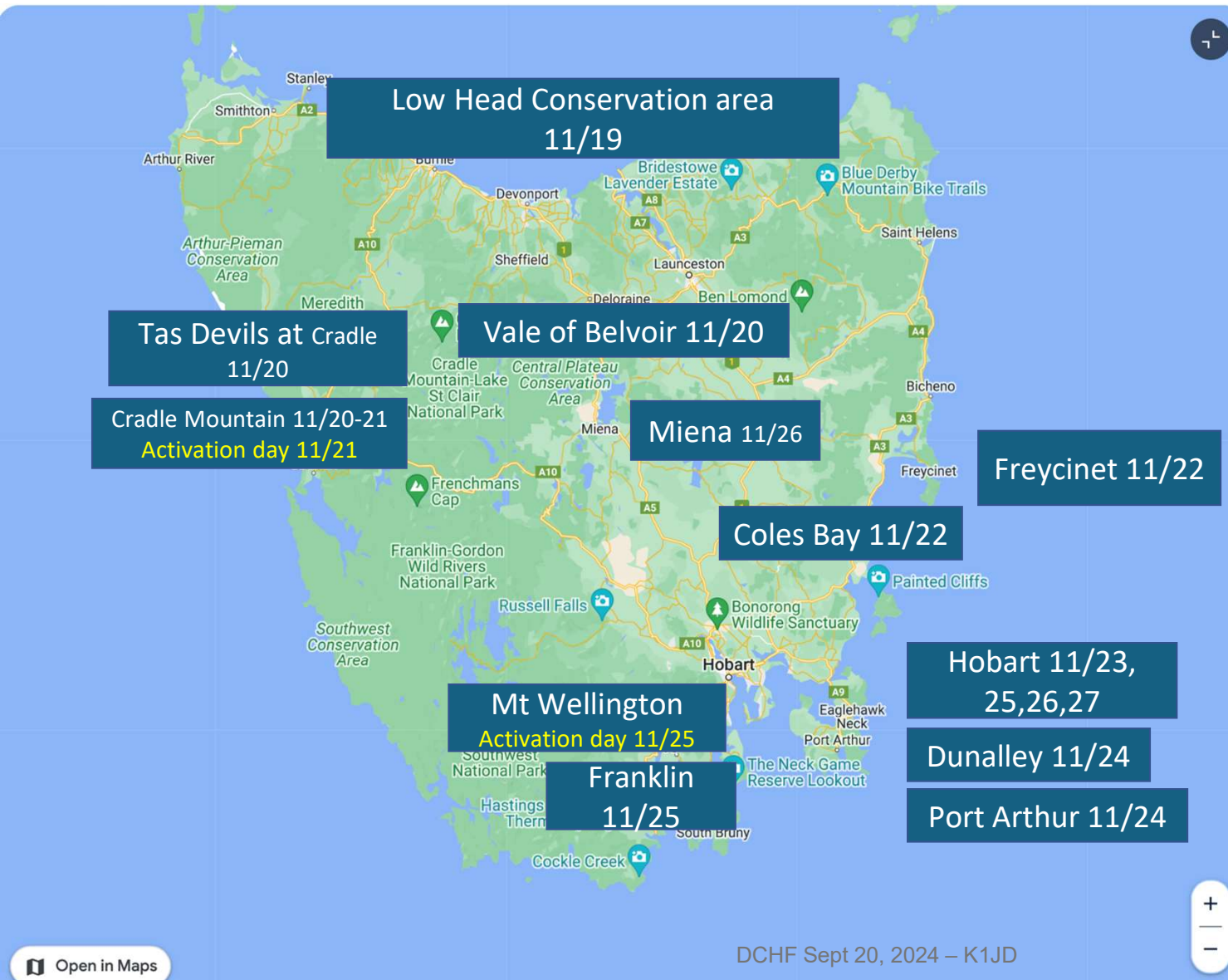
- Left home October 25 for Singapore; spent a few days there and departed on a Cruise to Sydney
 - Bukit Timah 9V/SG-001 (VHF only with 9V1VV/9V1YC) did not work out
- Arrive Sydney Harbor November 14 and to Cousin Tony/Kathy's home in Bayview NSW.
 - Trip to Tasmania
 - Back to Bayview
 - Trip to the Blue Mountain area and continue to their cattle farm in Marlee NSW
 - Back to Sydney, spend time with family, departed for home on December 6.
- My cousins made overall travel plans accommodating SOTA requests
 - Cradle Mountain VK7/CH-004 had not been activated at the time: not easy/significant planning
 - Mount Wellington VK7/SC-001 near Hobart could be done as well & offered much lower risk than a Cradle Mountain activation
 - Mount Tomah VK2/CT-043 while touring the Blue Mountain Area of NSW
 - Mount Gibraltar VK2/MN-024, an easy day excursion from the family's Farm in Marlee NSW

Propagation Check after Arrival in Sydney



- Prior to departing for Tasmania in several days, a sked was arranged with Fred to determine the best band at expected activation times (20z - 00z)
- Cousin Tony drove me to Ku-ring-gui Chase National Park located on the South Pacific Ocean – clear shot to SW USA
 - Initiated cell COMMs with Fred (photo left); discussed a HF propagation test plan
 - Deployed my SOTA setup with KX3/5B trap EFHW (wooded area behind the stone platform)
 - VK2/K1JD to KT5X (8200 miles) Radio Contact was successful! We ran through the HF Bands

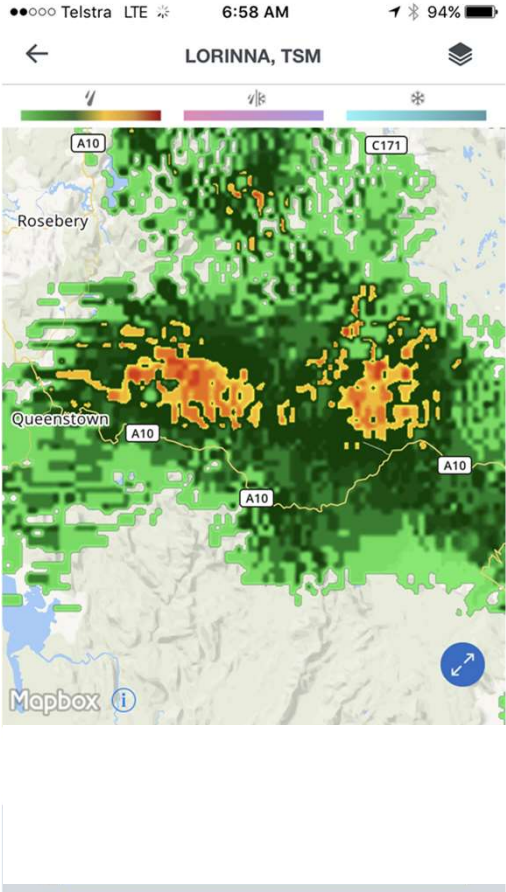
15m was the clear winner

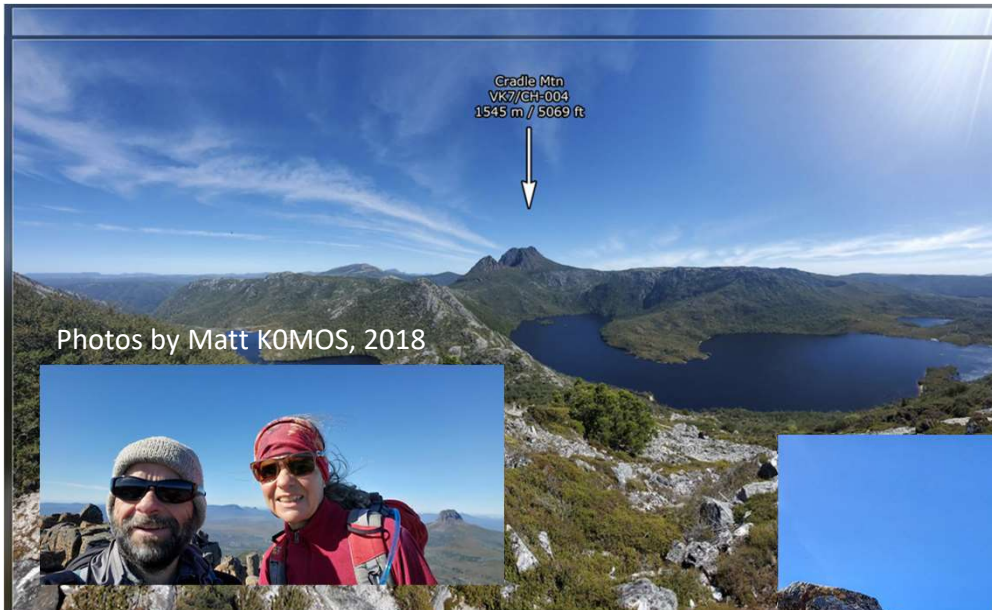


Busy Schedule in Tasmania!

- Flew from Sydney NSW to Launceston on November 19th
- Toured the island for 8 days
 - SOTA time constrained by travel objectives & reservations
- Flew from Hobart, TAS back to Sydney on November 27th

The single day (11/21/16) allocated to the Cradle Mountain Activation **A Complete Washout**





Cradle Mountain: Many Hours of Planning Invested

- Once on the Cradle Plateau, there is unique alpine vegetation.
- The 3000' ascent up to the summit through a jumble of dolerite scree and columnar towers.
- **Grade 4** on the [AWTGS](#)* signifies challenging walking tracks. Bushwalking experience is recommended for these tracks, which may be long, rough, and very steep.
- Estimated 7 hour round trip hike – better start early AM but impossible with the weather
 - Historically, deaths on Cradle largely due to exposure/hypothermia more than falls



CRADLE MOUNTAIN-LAKE ST CLAIR NATIONAL PARK, TAS

DCHF Sept 20, 2024 – K1JD

*Australian Walking Track Grading System 1-5

Mt Wellington VK7/SC-001 Activation

11/23/2016



- Mt Wellington is a drive up, so closer to 100% probability of success given several days in Hobart
- A mile above the Tasman sea, it was very cold!
- Mike AD5A had his rig on my alerted TX frequency and heard a weak CQ on 21.061 – 1st QSO
- Several tourists stopped by to ask questions



Time	Callsign	Band	Mode
22:38	AD5A	21MHz	CW
22:44	NS7P	21MHz	CW
22:45	K5SSR	21MHz	CW
22:50	N4DA	21MHz	CW
22:51	WA2USA	21MHz	CW
22:55	W8ZR	21MHz	CW
22:57	W7RV	21MHz	CW
23:00	KF7E	21MHz	CW
23:04	NS7P	18MHz	CW
23:05	VK4TJ	18MHz	CW

The Miena Hamfest!

11/26/2016

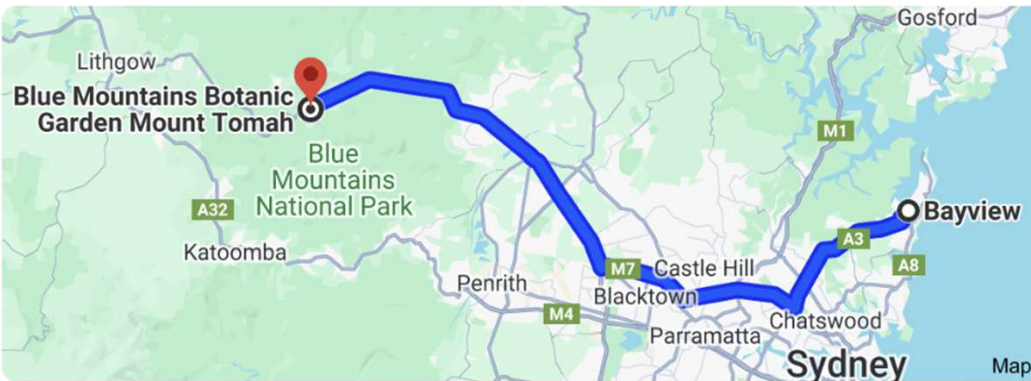
- Met Steve VK7CW in person, had mentioned this event after we arrived in Tasmania.
 - Cousin Tony and I drove from Hobart
- Had the pleasure of meeting a VK7 SOTA Association Manager, Justin VK7TW
 - Showed him my earliest design 5 band trap EFHW (PCB traps back then, tested in May 2016), KX3, pole etc.
 - Discussed how we typically set up and activate
 - He shared that activating in Tasmania is very difficult since a large number of peaks are technical climbs (he's done 64 activations to date)
- Except for the Aussie accents, it was typical of any Hamfest here in the USA



Departed Hobart 11/27 for Sydney

Arrived Back in NSW on 11/27/2016

Our trip from Bayview to the Blue Mountains Area commenced 11/29
(after 2 days of laundry)



1 hour 45 minutes by car; 114KM



Blue Mountains Mount Tomah Activation

Date: 29/11/2016 | ~~Summit: VK2/CT-043 (Mt Tomah)~~ | **Callsign: VK2/K1JD** | **Points: 6** | **Bonus:**

11/29/2016

0 | 🗑️

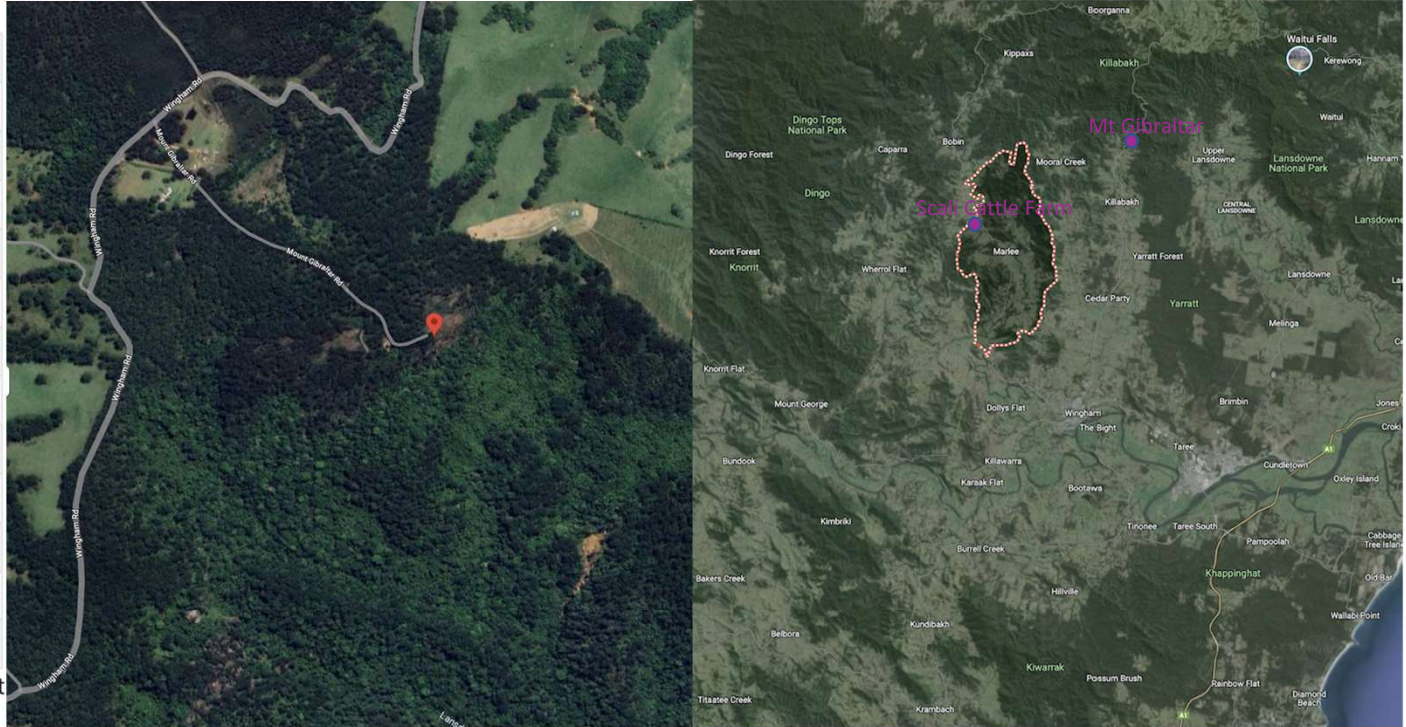
Time	Callsign	Band	Mode	Notes
23:10	VK7CW	21MHz	CW	
23:19	VK3PF	21MHz	CW	
23:22	VK7CW	18MHz	CW	
23:25	VK2IO	18MHz	CW	
23:30	VK7CW	14MHz	CW	
23:31	VK3AFW	14MHz	CW	
23:33	VK3CW/M	14MHz	CW	
23:42	VK2IO	21MHz	CW	
23:46	VK5CZ	21MHz	CW	
23:55	W8ZR	21MHz	CW	



Date:02/12/2016 | Summit:VK2/MN-024 (Mount Gibraltar) | Callsign:VK2/K1JD | Points: 4 | Bonus: 0 | 🗑️

Returned to Marlee Cattle Farm... Then a Day Trip to Mount Gibraltar 12/02/16

Time	Callsign	Band	Mode	Notes
23:42	KT5X	21MHz	CW	
23:45	W5YS	21MHz	CW	
23:46	N5FOC	21MHz	CW	
23:46	VK3CAT	21MHz	CW	
23:47	VK3PF	21MHz	CW	
23:49	VK7CW	21MHz	CW	
23:50	K5SSR	21MHz	CW	
23:52	VK3ARH	21MHz	CW	
23:53	ZL1BYZ	21MHz	CW	
23:54	JS1IFK	21MHz	CW	
23:55	VK3FM	21MHz	CW	
23:57	W8ZR	21MHz	CW	
23:58	JA1NUT	21MHz	CW	

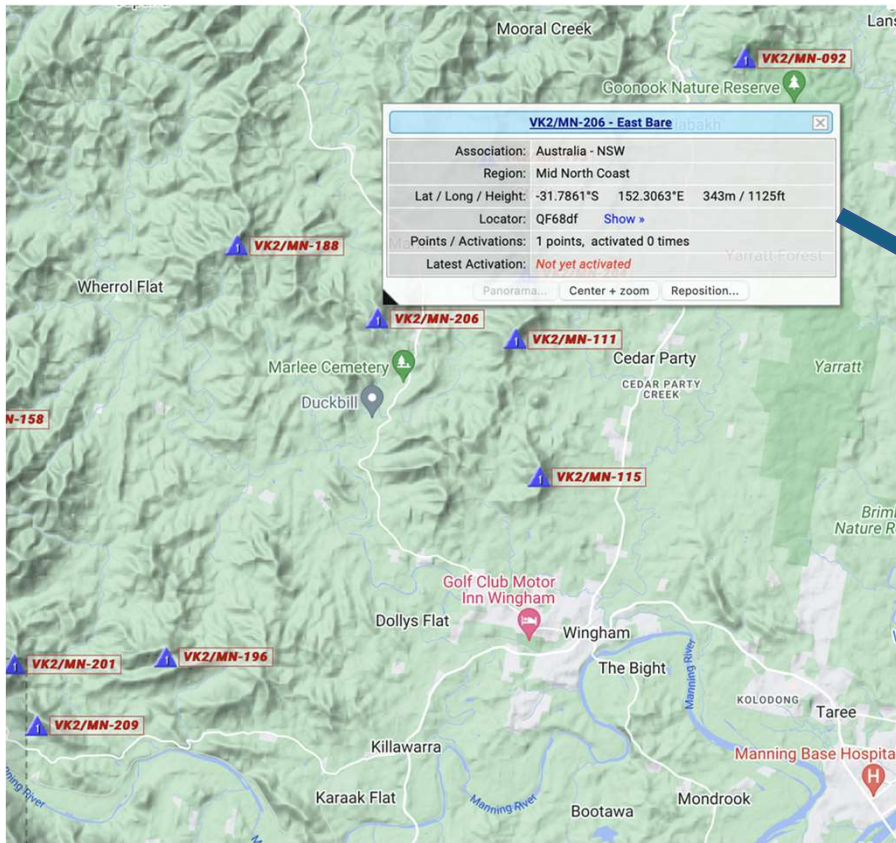


Date:03/12/2016 | Summit:VK2/MN-024 (Mount Gibraltar) | Callsign:VK2/K1JD | Points: 0 | Bonus: 0 | 🗑️

Time	Callsign	Band	Mode	Notes
00:00	VK7CW	21MHz	CW	
00:01	KT5X	21MHz	CW	
00:03	NS7P	21MHz	CW	

Jim W8ZR worked me on all 3
A Clean Sweep!

The Cattle Farm in Marlee, NSW



VK2/MN has 217 Peaks



December 3, 2016

**George WB5USB, a
5X Mtn Goat with
over 600 activations,
will now share
photos from his
many peaks in New
Mexico**



Sandia Crest



Washington Benchmark



Mount Withington



Mount Powell





Ebon Benchmark

Gallinas Peak



Pinon Mesa



Mogote Peak



Elk Mountain



Monjeau Peak





Greenie Peak